



# QUICK AND EASY DEVICE DEPLOYMENT

Mobile devices are powerful enterprise computing platforms, but not when they are sitting on a desk in IT waiting for deployment. It is important to get these devices into the hands of your workers ASAP, but they must be properly configured, secured and controlled. They should be configured according to user need and company mobility policies. What connections are allowed (cellular, WiFi, or VPN), what device features are available (i.e. camera, SD card, or Bluetooth radio), and most importantly, what applications and content need to be available for the worker? Effective device deployment is the critical first stage of a successful enterprise mobility program.

# Easy Enrollment Anywhere & Anytime

The first step when deploying a new device is to enroll it with the mobility management server. This is true for all deployment types: COBO, COSU, COPE, and BYOD – for one device or thousands at a time – enrollment is required to provision a device and manage it remotely. SOTI MobiControl includes an LDAP interface to support enrollment via the employee’s AD credentials. It also supports SAML 2.0, for enterprises that use third-party Identify Providers (IdPs) for device enrollment.

SOTI MobiControl supports three basic methods of enrollment:



## **Self-service**

IT staff provides the remote user an email, printed instructions or text message that contains an enrollment ID and the user’s AD credentials. The device user navigates to the Google Play Store (or SOTI Self-service Portal URL), downloads the SOTI MobiControl agent, and uses the information provided to connect to the deployment server to enroll the device.



## **Third-party solution**

Many device OEMs have enrollment and staging solutions built into their hardware. SOTI MobiControl integrates with these solutions to deliver a simplified and consistent enrollment process. Some examples include: Apple Device Enrollment Program (DEP), Zebra StageNow, and Honeywell EZConfig.



## **SOTI stage**

SOTI stage is a rapid enrollment and staging application for Android and Windows devices. SOTI stage scans a custom barcode supplied by the IT admin that instructs the mobile device to do one or more of the following:

- Set basic configuration settings that enable the device to connect to the SOTI MobiControl Deployment Server (e.g., WiFi, APN, date and time, enrollment ID)
- Download files from FTP/HTTP servers
- Connect to the SOTI MobiControl Deployment Server and download and install the MobiControl Device Agent

# Fast, Flexible Provisioning

After a device is enrolled and 'under management,' provisioning is the next step in the deployment process. Provisioning takes the factory-default device and puts it into a productive state in accordance with the company's mobility policies - turn on and off features, configure settings, install applications and even use device 'lockdown' to put it into kiosk mode. SOTI MobiControl delivers powerful provisioning features, including:

## Provisioning Features



### Profiles

A profile is a set of configurations (payloads) pushed down to a device or group of devices based on device role or geographic location. SOTI MobiControl profiles can also be defined according to LDAP group. Profiles are used to make device provisioning fast and error-free.



### Device Feature Controls

Depending on device make, manufacturer and operating system, there are potentially dozens of device features to turn on and off. Hardware features (camera, SD Card, or microphone), connectivity features (cellular, roaming, and WiFi), as well as Data Loss Prevention (DLP) features and SMS/MMS messaging.



### Packages

Packages are containers that enable IT admins to manage applications, content and scripts on a device. When combined with profiles, they enable IT to manage a user's applications and content based on user role or geographic location. Packages are pushed down to the user silently (in the background), or made available on the self-service portal.



### Kiosk Mode

SOTI kiosk mode restricts a mobile device to a single application (iOS & Windows) or a customized suite of applications (Android). SOTI kiosk mode uses HTML to replace the standard device user interface and prevents the user from accessing device settings or unauthorized applications and websites. Device lockdown keeps the device secure, private and productive.

# Device Retirement is Mandatory

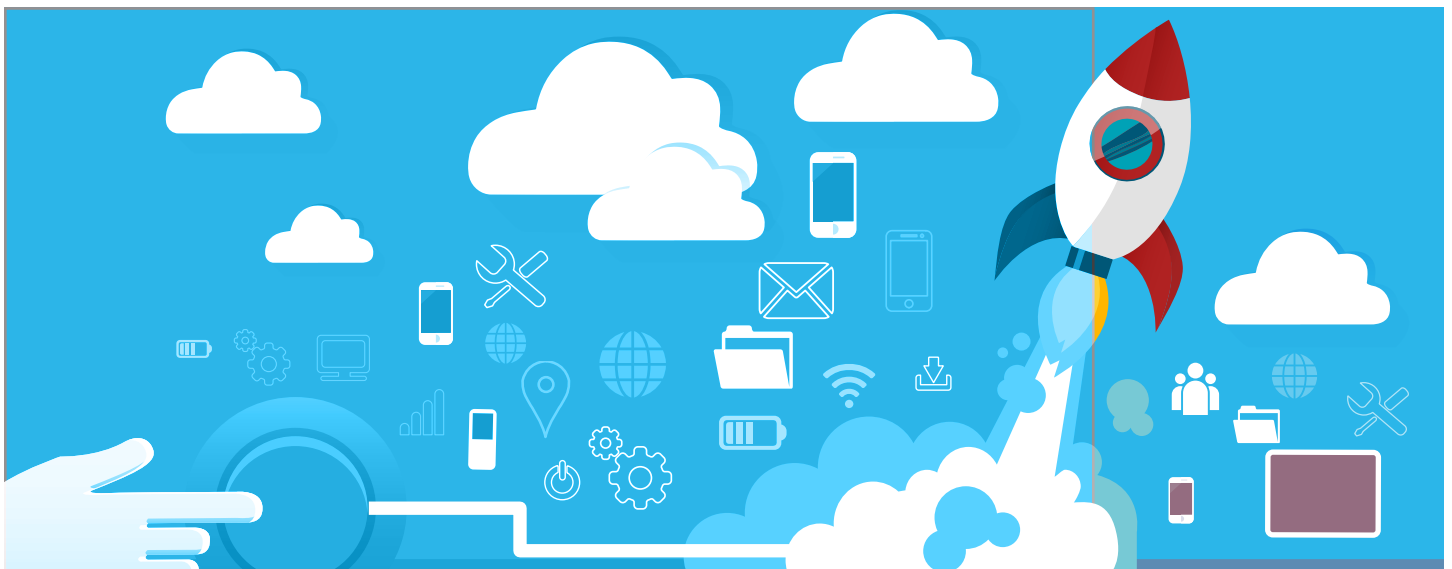
Device enrollment and provisioning are critical components of mobility management, but device retirement is also important. Whether it is lost or stolen, being repurposed within the company, or at its natural end-of-life, an enterprise mobile device needs to be retired correctly. Device retirement is especially important for regulated industries such as healthcare, where by law, sensitive patient data must be removed from a smartphone or tablet.

Device retirement can include:

- Un-enrolling the device and removing it from management
- Full or selective corporate-only data and application wipe
- Restore device feature controls to factory default settings
- Device lockdown resets device passcode and blocks access

## SOTI delivers Mobility and IoT Management

SOTI has been managing mobility for two decades. We managed dedicated-purpose mobile devices before smartphones were introduced, and now we are leading the way to Unified Endpoint Management (UEM) and making the IoT manageable. We have a proven track record of delivering powerful, easy-to-use enterprise mobility management solutions for all industries. No matter where or how a device is used, SOTI MobiControl does it all: endpoints, applications, content, email and security are all managed from a single, unified interface.



SOTI is a proven innovator and UEM industry leader. Over 17,000 companies globally rely on SOTI for their diverse mobility management needs to fuel differentiation and take mobility to endless possibilities.

[SOTI.net](https://www.soti.net)

Copyright 2017 © SOTI Inc. All Rights Reserved. | Apple Copyright © 2017 Apple Inc. All rights reserved. Windows Copyright © 2017 Windows All rights reserved. Android Copyright © 2017 Android Inc. All rights reserved.

**SOTI**